



## Installation and Operating Instructions

Installation kit eSlider

Vehicle Mercedes V-Klasse Typ  
639/2

Art.No. S27250821

Dokument No.	S27250821	Subject to technical modifications without prior notification and to errors. Reproduction, even in part, only permitted with permission from Veigel GmbH + Co. KG.
Created	27.09.2021	
Name	Hauff	
Revised		
Version	1	

## **CONTENTS**

Revision history	4
Symbols used	5
General information	6
Product description	8
Operation	10
Assembly	12
Maintenance and care	20
Installation record	21
Transport, storage and disposal	23

## Änderungshistorie

Edition	Revisions	Chapter
1	Initial Version	

## Symbols used

The following symbols are used in these operating instructions:



This symbol refers to information that, if not observed, will pose a risk to your health or the functionality of the device.



This symbol refers to important additional information



This symbol refers to tips and recommendations.

Individual images contained in these instructions may deviate from the driving aid you received.

### Veigel Hotline:

Veigel GmbH + Co. KG	Telephone:	+49 (0) 7941 60585-0
Verrenberger Weg 36	Fax:	+49 (0) 7941 60585-20
74613 Öhringen	e-mail:	info@veigel-automotive.de
Germany	web:	<a href="http://www.veigel-automotive.de/">http://www.veigel-automotive.de/</a>

## General information

### General safety information

The driving aid is supplied in the form of an installation kit that is ready for assembly. It was designed and built in line with the harmonised standards that must be observed as well as further technical specifications. Consequently, it is a state-of-the-art product and provides the best possible level of safety while in operation. The driving aid left the factory in a flawless condition in terms of technical safety. However, safety can only be achieved in practice if all the required actions have been taken. The person responsible for operation has a duty to plan these actions and monitor their implementation.

### Beachten Sie bei der Montage vor allem:



- Installation and maintenance work may only be performed by specialist staff using suitable tools.
- Please read these installation and operating instructions carefully before installing the driving aid.
- Pass the installation and operating instructions for the driving aid on to the customer, together with any parts certificate, when you hand over the vehicle.
- Observe the applicable accident prevention and safety provisions when installing and maintaining the driving aid!
- Only accessories obtained from the manufacturer may be used with the driving aid.
- If the driving aid is installed in an authorised workshop, the installation record must be filled in (see appendix). If it is installed at the factory, a separate installation record will be prepared and archived at the Veigel factory.

## Observe the following in particular as a user:



- Comply with generally accepted codes of practice when using and operating the driving aid!
- Observe the applicable accident prevention and safety provisions when operating the driving aid!
- The driving aid may only be operated if it is in a flawless, functional condition. Arrange for functional faults to be remedied immediately
- Only use the driving aid with the type(s) of vehicle for which it is intended (see INTENDED USE, page 9).
- Always keep the complete installation and operating instructions inside the vehicle.



**The eSlider must be registered by a technical service.**



If this information is not observed, this will void the warranty, the manufacturer's liability and, in certain situations, the type approval. As a consequence, no claims can then be made against us.

## Product Description

### Function

The eSlider assembly kit is the connection between the vehicle and the eSlider. It is mounted on the vehicle floor and offers an optimal installation zone for the eSlider.

Furthermore, the belt connection is included in the scope of delivery, which must be mounted on the eSlider according to specifications.

### Type plate



Please enter the factory number of the driving aid here:

**FACTORY. NO.:** \_\_\_\_\_

The type plate is located on the base rail.



The type plate and factory number are important when it comes to uniquely identifying the scope of delivery.

## Intended Use

Manufacturer	Model	Type	year
Mercedes Benz	V-Klasse	639/2	

## Sicherheitshinweise



Keep the installation and operating instructions with the vehicle documents.

The operation of the vehicle is changed by the built-in eSlider.



Please draw your attention to the eSlider when you rent the vehicle or when you visit the workshop and instruct the relevant people on how to use it.

Take your time to familiarize yourself with the converted vehicle.



Check carefully, otherwise the entry aid will not function properly.

### Check

### Maßnahme

---

#### vor jeder Fahrt

Make sure that the eSlider is in the foremost position for driving.

With the help of the control unit either move manually to the stop or set the memory function so that the eSlider moves all the way forward.



Have irregularities checked in a workshop.



You have installed a high-quality Veigel product in your vehicle, which has been carefully manufactured. Please note the points above in order to maintain the function of the driving aid in the long term.

## Operation



Please read the operating instructions supplied with your eSlider

**Safety Warnings**



- The assembly of the eSlider may only be carried out by qualified personnel with suitable tools.
- Before starting the installation, check whether the data in the installation kit at hand matches that of the vehicle. Please notify us immediately if this is not the case. (Veigel hotline, see page 5).
- Proceed point by point according to the assembly instructions.
- Drill, saw, cut and screw carefully so as not to damage cables, heating pipes, etc.
- Carefully seal all screw holes and holes.
- When working on the seat, pay attention to electrical lines, especially for airbag equipment. To avoid error messages, cable connections should not be loosened when the ignition is switched on.



Work on the airbag system may only be carried out by trained personnel



Work on the high-voltage system may only be carried out by trained personnel.

**Tightening torques**



For vehicle conversions with Veigel driving aids, the tightening torques prescribed by the vehicle manufacturer apply.

The standard DIN tightening torques in the following table apply to Veigel parts, unless other tightening torques are specified in the text.

Regelgewinde			Feingewinde		
Abmessung	Anzugsdrehmoment [Nm]		Abmessung	Anzugsdrehmoment [Nm]	
	8.8	10.9		8.8	10.9
M4	3	4,4	M8x1	27	39
M5	5,9	8,7	M10x1	55	81
M6	10	15	M10x1,25	52	76
M8	25	36	M12x1,25	93	135
M10	49	72	M12x1,5	89	130
M12	85	125	M14x1,5	145	215
M14	135	200	M16x1,5	225	330
M16	210	310			

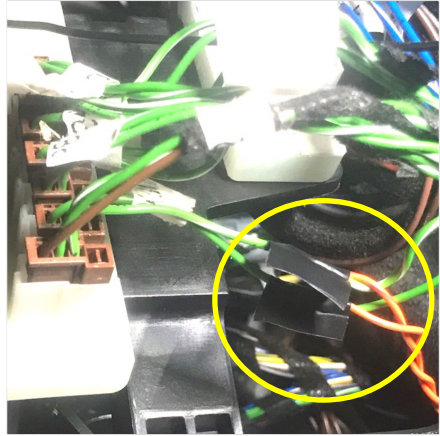
1. In order to be able to build the assembly kit in the vehicle, the original seat and the original seat console must be removed. The electronics, battery or cables underneath must be laid in the vehicle in such a way that they do not hinder the installation of the assembly kit. **Attention**, cables may have to be extended and the battery relocated.



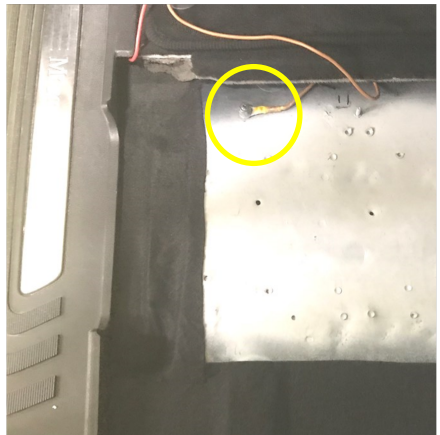
2. It is advisable to lay the connection cables for the eSlider now.
3. Terminal 30 is taken directly from the battery or in the fuse box. **Attention**, the flat fuse must be attached here.
4. Terminal 15 is also taken from the fuse box.
5. Lay both cables in the vehicle to the eSlider.



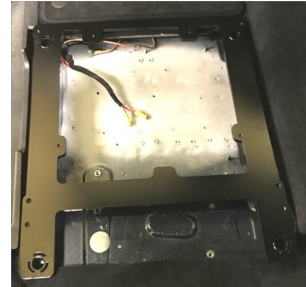
6. The Can Bus signal can be found on the Can Bus connector in the driver's footwell. Look for a twisted pair of cables with the colors green and green / white.
7. **Attention**, only the insulation may be removed here, but the cable must never be cut. Now the orange / brown or the orange / green cable can be soldered on.
8. These cables are also laid to the seat console.



9. Find a suitable ground point to remove terminal 31 from there. The brown cable can be connected here.
10. Solder in the resistor to shut down the airbag.
11. Solder in the resistor to shut down the belt recognition.
12. **Attention**, this work may only be carried out by trained specialist personnel and must be certified for the customer.



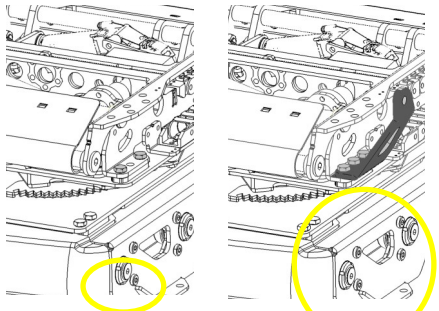
13. If the vehicle is prepared, the mounting plate with the distances is placed on the original screw holes.



14. The belt lock must now be removed from the original seat. To do this, remove the plastic cover and unscrew the screw. The cable of the belt buckle can be attached to the belt buckle with the help of a cable tie.

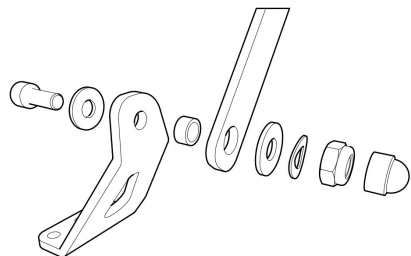


17. Unscrew the two marked M8x16 hexagon head screws from the console.

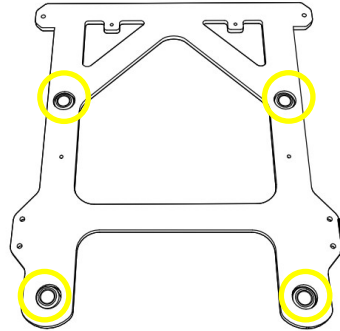


18. The belt connection is now placed here and screwed and tightened with the 3 enclosed M8x 20 hexagon screws and lock washers.

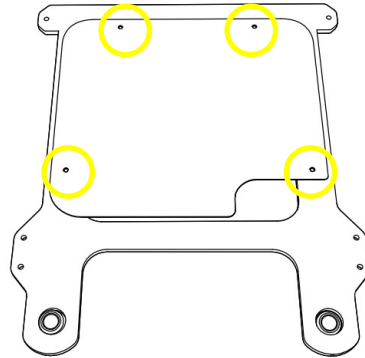
19. The belt buckle is then fitted as shown in the picture. Only tighten the M10 locking nut so tightly that the belt lock can still be twisted with difficulty. Attention, when installing on the right-hand side, proceed in a mirror-inverted manner



18. Now an M10x40 cylinder screw with a locking washer is inserted and screwed into each screw holder.

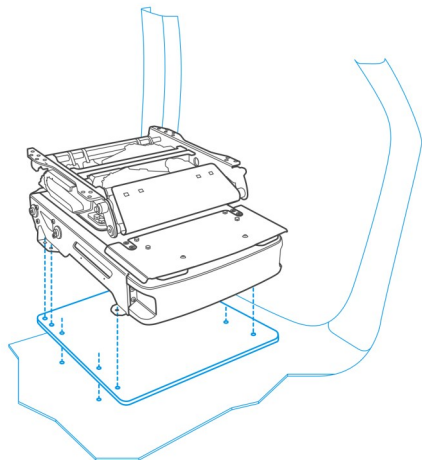


19. Next, the cover is screwed onto the mounting plate. Use the 4 M6x10 pan-head screws for this.



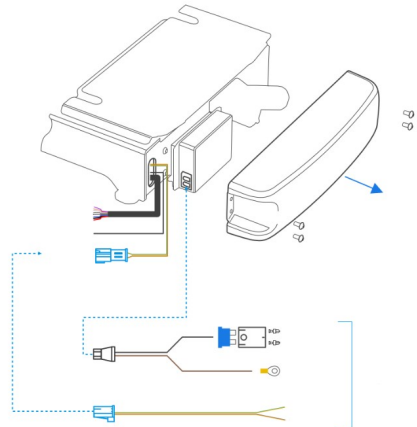
20. In the following, the eSlider is placed on the mounting plate. Attention, due to its weight, the eSlider should only be carried by 2 people.
21. Align the eSlider so that the hole pattern of the console is aligned with that of the mounting plate.

22. Screw the console tight with the 6 M8x 26 cylinder screws. The screw heads are then covered with the plastic covers.



23. Remove the front cover and connect the cables as follows.

- Terminal 30 black cable
- Terminal 31 brown cable
- Terminal 15 black cable
- Can High orange / green
- Can Low orange / brown

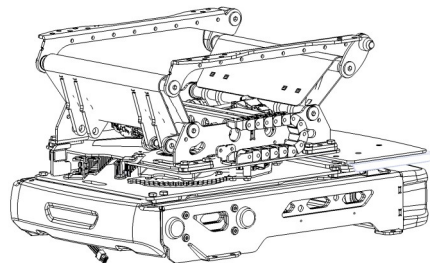
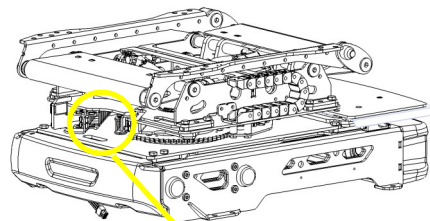


24. Plug the control panel into the connector on the rear of the console. You can now do your first test drive. **Attention**, make sure that the cable is not pinched.

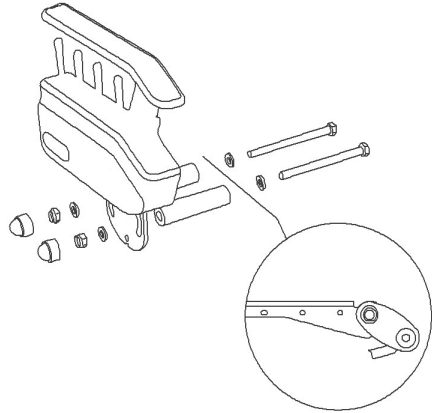
25. Leave the console in the raised position in order to be able to mount the control unit.

26.

26. Unplug the control unit and dismantle the lifting unit's energy chain. The control unit cable is pulled through the console from behind so that it can be pressed into the energy chain from bottom to top. The energy chain can now be reassembled.



27. Insert the two M6x 70 Hexagon bolts from behind through the support struts of the console. Slide the two spacers over the screws from the front and attach the control panel. The control unit is screwed tight with a washer and an M6 lock nut. To minimize the risk of injury, put the enclosed plastic caps over them.
28. **Caution**, cables that are too long can be fastened with a cable tie. However, it is always important to ensure that the cable harness is free of tension in every position.
29. Test the console by approaching each end position once.
30. Program the driving position as well as the transfer position together with the customer and explain to him how he can teach the control himself.



## Check Function



- After completing the installation, check that the installation has been carried out correctly:
- Check whether the eSlider can be moved back completely without a collision.
- Check whether all cables are laid in such a way that they cannot be trapped.
- Check whether the mounted seat can be easily adjusted on the eSlider
- Check whether the eSlider is correctly connected electrically.
  - it may only work when the ignition is switched off as long as the CAN bus is not yet in sleep mode

-Check whether the eSlider moves backwards with the emergency button.

## Dismantle the driving aid



The dismantling of the driving aid takes place in reverse order to the assembly.

Convert driving aid



Before starting the installation, check whether the data in the present installation kit matches that of the vehicle. The driving aid may only be installed in a vehicle of the same type.

Please notify us immediately if this is not the case (Veigel hotline see page 5).

Check the assembly kit for wear and, if necessary, replace the parts with original parts from Veigel. When ordering, please state the order number and serial number of the driving aid on the nameplate (see product description on page 8). All class 10.9 fastening screws must be replaced with new ones.

## MAINTENANCE AND CARE

### safety information



Maintenance and repair work on the devices may only be performed by authorised and appropriately trained staff!

Arrange for functional faults to be remedied immediately by a specialist workshop.

### Maintenance/care

Every 10.000 bis 15.000 km

Action	Parts
Adjust and tighten	All screw connections on the base rail, pedal connections



These jobs can also be integrated into the customer service.

## Installation record



This record will be completed if the driving aid is installed at a specialist workshop. If it is installed at the Veigel factory, a separate installation record will be prepared and archived there.

Customer:	
Article designation:	Installation date:
Factory no.:	Time:
Article: new <input type="checkbox"/>	Vehicle:
Article: supplied <input type="checkbox"/>	Licence plate no.:
<input type="checkbox"/> Vehicle acceptance: Note any damage & specific features below.	

Installation:	<input type="checkbox"/> All screws are tight and have been sealed	<input type="checkbox"/> The ball heads are equipped with safety devices
	<input type="checkbox"/> Driver/connecting parts are securely fitted	<input type="checkbox"/> All joints are lubricated
	<input type="checkbox"/> Lever/rods can move freely	<input type="checkbox"/> Cladding has been assembled (where possible)
	<input type="checkbox"/> Pedal paths sufficient, even if the brake circuit fails?	<input type="checkbox"/> All cables have been laid abrasion-free
	<input type="checkbox"/> Full throttle/idling positions are reached	<input type="checkbox"/> Type plate has been attached
	<input type="checkbox"/> Traction and force rods are countered/secured / safety devices are installed	<input type="checkbox"/> Factory number has been entered in the documentation
		<input type="checkbox"/> Customer has received the installation and operating instructions

Additional assembly parts:

Art. no.:

_____	_____
_____	_____
_____	_____
_____	_____

Specific features: \_\_\_\_\_  Test drive performed  
 \_\_\_\_\_  Installation OK  
 \_\_\_\_\_

Signature: \_\_\_\_\_  
 Fitter

Signature: \_\_\_\_\_  
 Supervisor



## Transport, storage and disposal

### Transport and storage



**Transport and storage are only permitted in the original packaging.**

### Disposal



**Always comply with national and regional waste disposal directives.**

We ensure that the majority of the materials used to make our products are recyclable, right from the design phase.

The packaging consists of cardboard boxes, paper and, in some instances, films that can be handed in at recycling centres or public cardboard collection points.



In case of uncertainty, please contact your county waste consultancy department.

Veigel GmbH + Co. KG  
Verrenberger Weg 36  
D - 74613 Öhringen

tel +49 7941 60585 0  
fax +49 7941 60585 20

[info@veigel-automotive.de](mailto:info@veigel-automotive.de)  
[www.veigel-automotive.de](http://www.veigel-automotive.de)

A SOLUTION FOR  
EVERY VEHICLE